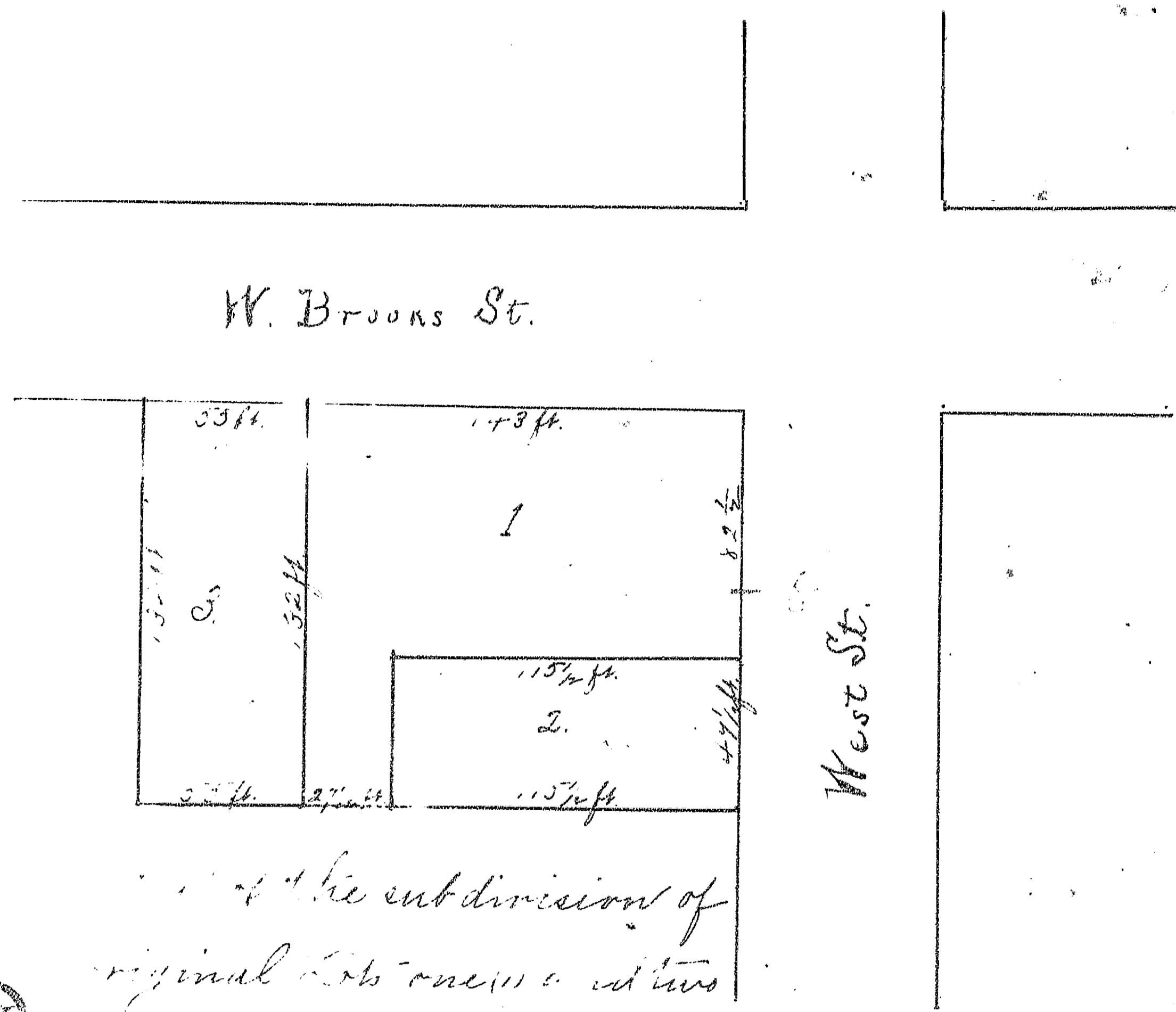


Filed for Record January 16th 1891 at 2 o'clock P.M.

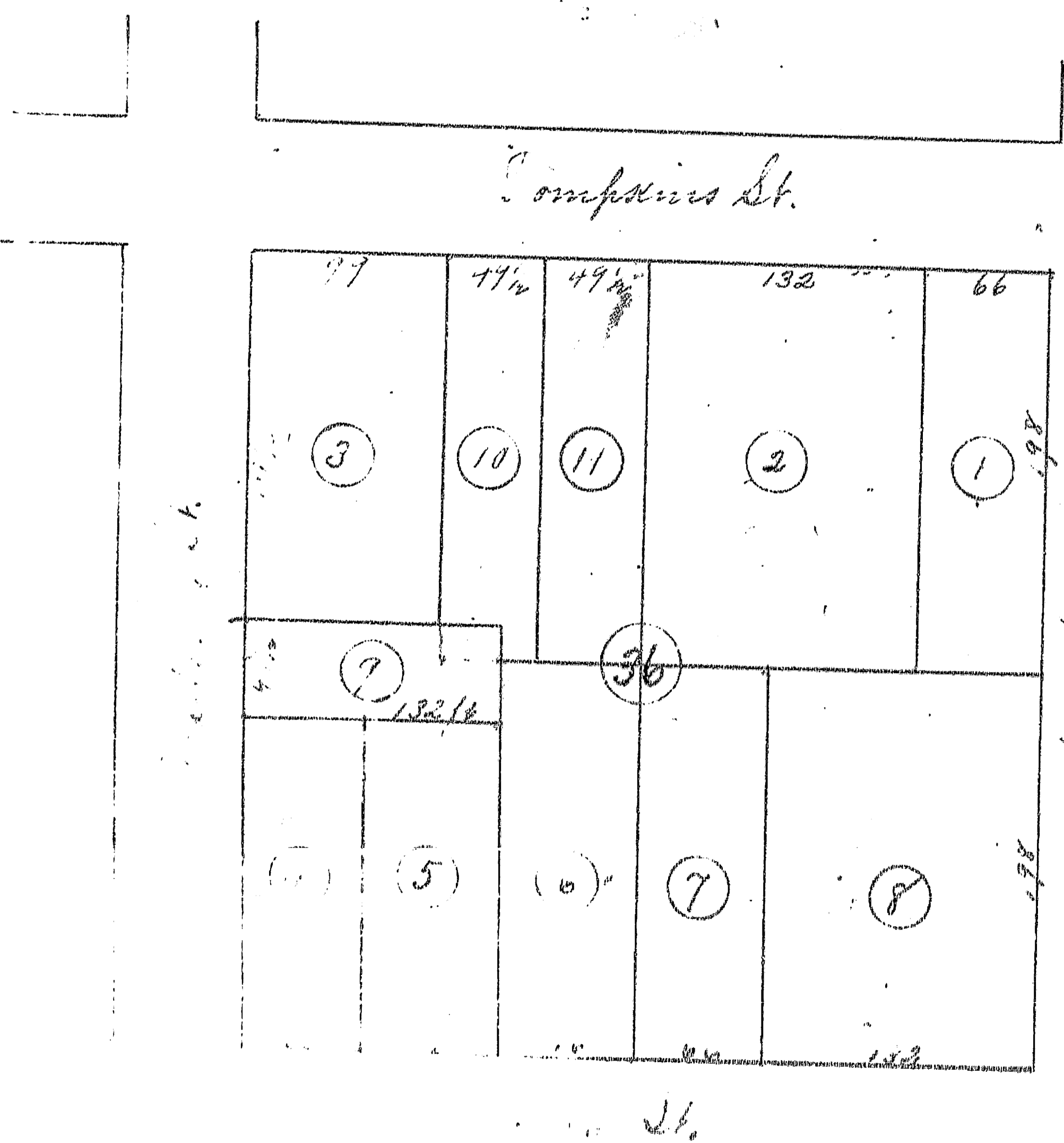


Plat of the subdivision of original lots one & two Block Seventy-eight City of Galveston, Tex.

Platted from records May 12th 1890.

Mills G. Norris  
County Surveyor.

Filed for Record January 16th 1891 at 2 o'clock P.M.

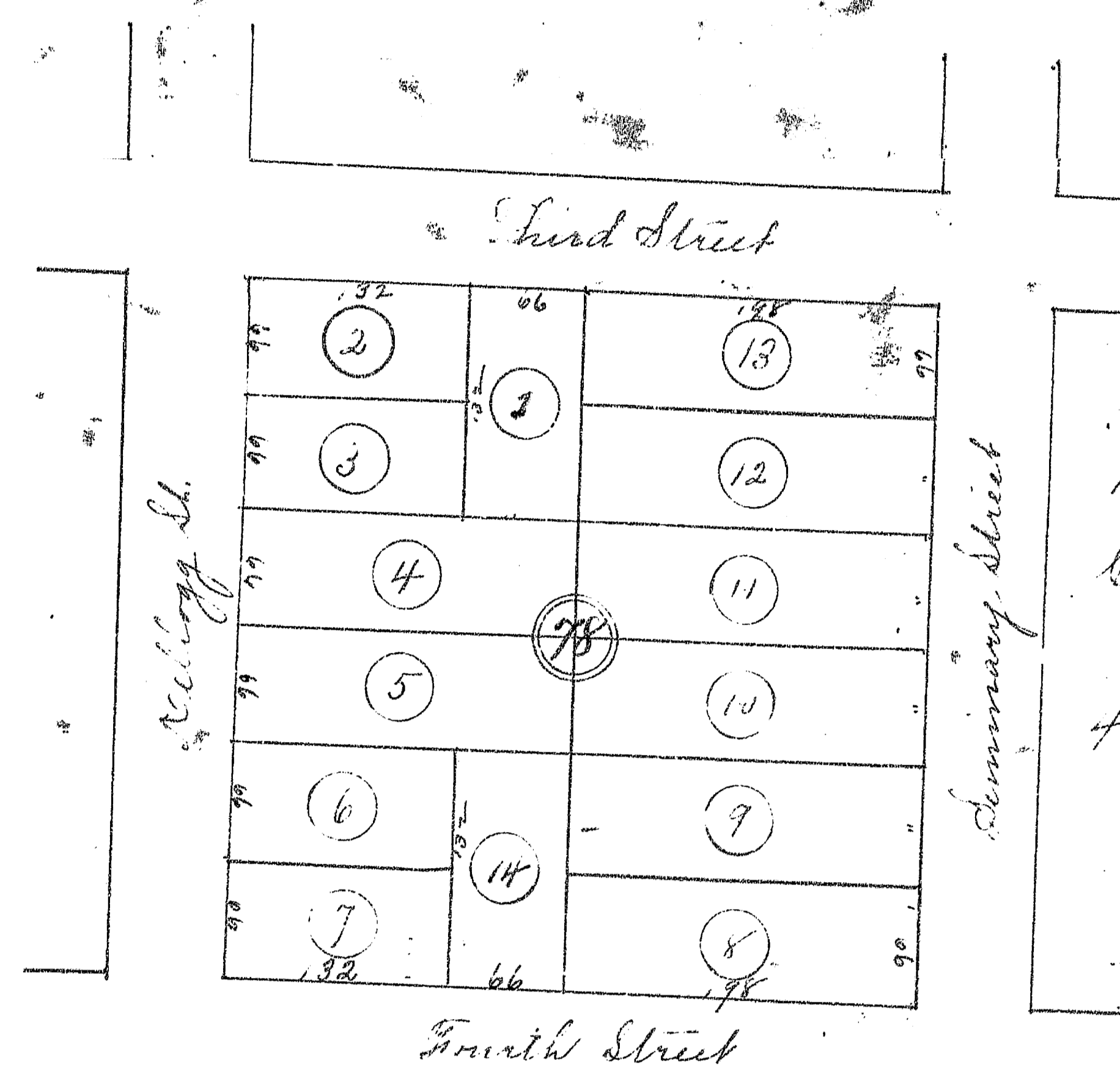


Plat of a subdivision of original lots 1, 2, 3, 4, and 5 in the subdivision of original lots 1, 2, 3, 4, 5, and 6, Block Thirty-six City of Galveston, Tex. Platted from the records 11th 23rd 1890.

Mills G. Norris  
County Surveyor.

No. 130116

Filed for Record January 16th 1891 at 2 o'clock P.M.

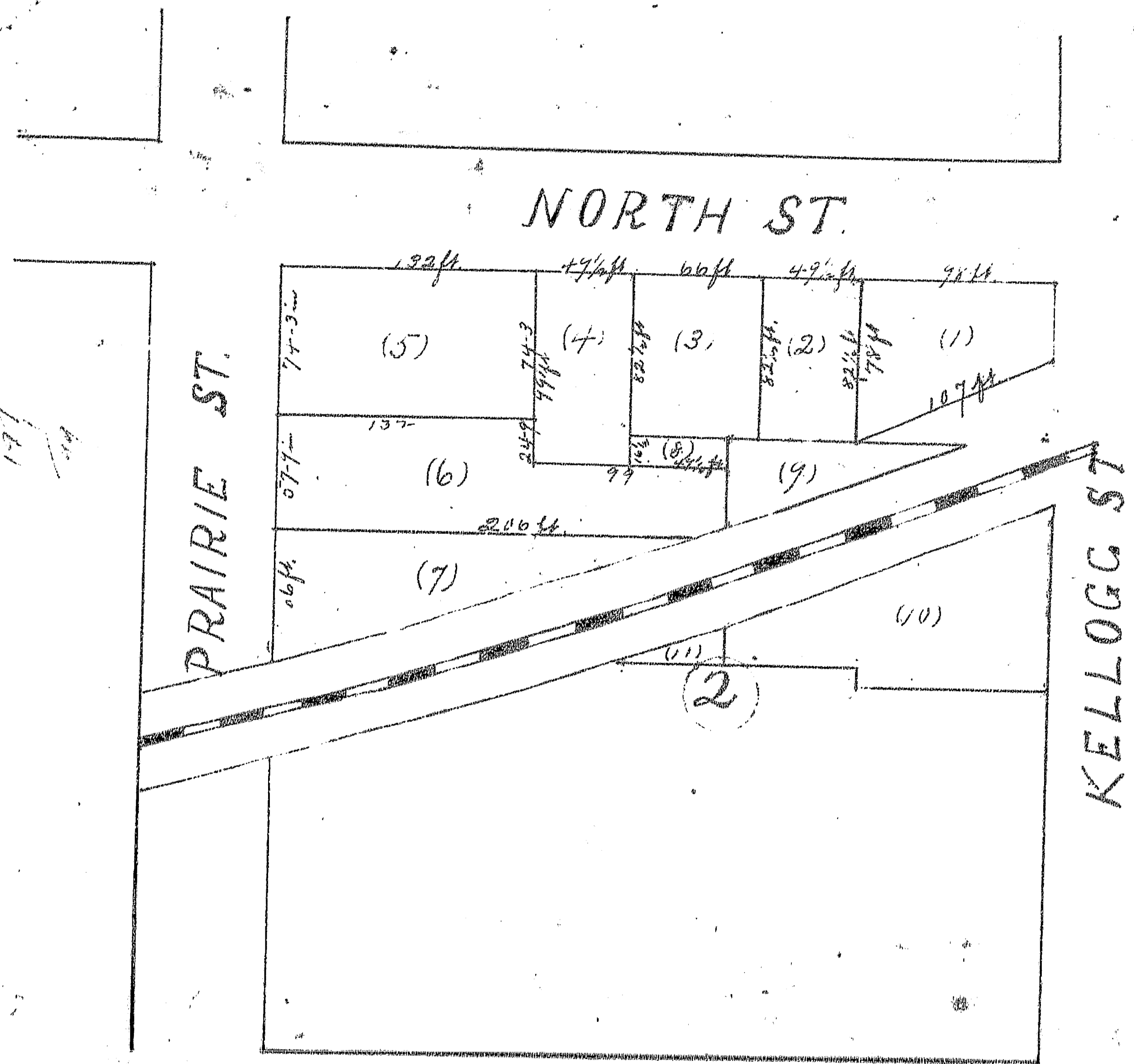


Plat of a subdivision of Sub Lots 1, 2, 3, 4, 6, 7, 8, 12, City of Galveston, Tex. Platted from records April 4th 1890.

Mills G. Norris  
County Surveyor  
Original Sub. Lots Numbered in red ink.

No. 130117

Filed for Record January 16th 1891 at 2 o'clock P.M.



Plat of a subdivision of Sub Lots 1, 2, 3, and 4, Block Sixty-two City of Galveston, Texas County Surveyor. Platted by order of County Clerk from deed records May 12th 1890.

Mills G. Norris